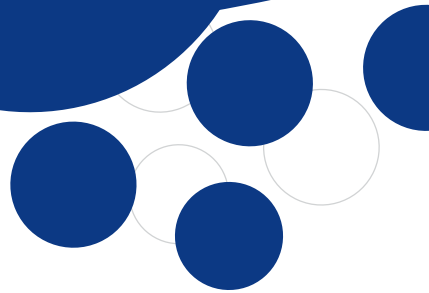




ielab



# CFIS

## Continuous Flow Integrative Sampler

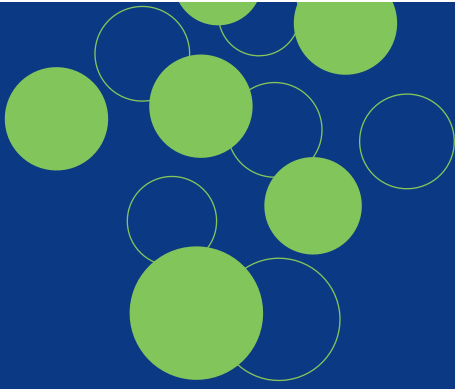
### QUALITY CONTROL IN WATERS CONTINUOUS SAMPLING

**ielab** presents its exclusive CFIS (Continuous Flow Integrative Sampler), designed for the continuous sampling of a wide range of pollutants in all types of water bodies.

- SEA WATER
- DRINKING WATER
- CONTINENTAL WATER
- WASTE & SEWAGE WATER

- DRINKING AND WASTEWATER TREATMENT PLANTS
- WATER SUPPLY COMPANIES
- SEWAGE SYSTEMS

- ENVIRONMENTAL LABORATORIES
- WATER MANAGEMENT COMPANIES
- ENVIRONMENTAL CONSULTANTS AND ENGINEERS



# CFIS

CONTINUOUS FLOW INTEGRATIVE SAMPLER

## CONTINUOUS SAMPLER

CFIS is a sampling device, totally submersible and autonomous, for the control of pollution in water.

It is capable of sampling easily and precisely water pollutants considered in various regulations and legislations.

This device is based in the most advanced technology for extraction of pollutants in water, SPE and SBSE, which facilitates the analysis of the samples following the usual techniques and protocols.



## ADVANTAGES

- Provides temporal and spatial information of the pollution sources.
- Up to 21 days of operative time.
- It is the only sampler capable to obtain the total concentration (particulate and soluble fractions).
- Versatile. For ANY TYPE OF WATER BODY.
- Easy to handle, transport and use.
- High sensitivity.
- Includes quality control of the sampling process.

## ANALYTICAL APPLICATIONS

- NON-POLAR COMPOUNDS: PAHs, PCBs, PBDEs, POCs, Alkylphenols,
- CONTROL OF CYANOTOXINES AND CYANOBACTERIA. (Microcystines).
- POLAR ORGANIC COMPOUNDS (triazines, pesticides, phenylureas) and COVs (trihalometanes, BTEX, ...) in progress.



C/ Dracma, 16  
Pol. Ind. Las Atalayas  
03114 Alicante (Spain)

T. +34 966 10 55 01  
F. +34 966 10 55 03

[www.ielab.es](http://www.ielab.es)  
[comercial@ielab.es](mailto:comercial@ielab.es)